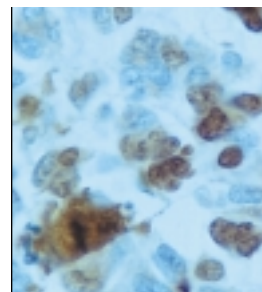


CALENDAR OF EVENTS



If you would like to include an event in this calendar in future issues of Cancer Control, please mail the information to Cancer Control: Journal of the Moffitt Cancer Center, 12902 Magnolia Drive, Tampa, FL 33612, call (813) 632-1349, fax to (813) 903-4950, or send via e-mail to ccjournal@moffitt.usf.edu.

Calendar of Events

January 2000

13 - 14

Radioguided Surgery and Minimally Invasive Breast Biopsy; Tampa, Fla.

Contact the Radioguided Surgery Center, H. Lee Moffitt Cancer Center & Research Institute, 12902 Magnolia Dr, Tampa, FL 33612. Telephone: (813) 979-7252 or 1-888-456-2840; fax: (813) 903-4910. (Also scheduled February 24-25 [special program designed for plastic surgeons], March 23-24, April 27-28, May 18-19, June 22-23, August 17-18, September 14-15, October 12-13, November 16-17, and December 7-8, 2000.)

15 - 19

17th Annual Society of Gynecologic Nurse Oncologists Symposium and Pre-Symposium Workshop, "Embracing a New Era"; Tampa, Fla.

Contact Connie Birk, RN, BSN, OCN, Program Chair. Telephone: (714) 536-1892; fax: (949) 642-1361; e-mail: blbirk@aol.com.

16 - 18

Florida Association of Pediatric Tumor Programs' 23rd Annual Seminar: Advances in Pediatric Hematology/Oncology; Cocoa Beach, Fla.

Contact Florida Association of Pediatric Tumor Programs, PO Box 17757, Tampa, FL 33682-7757. Telephone: (813) 632-1310; fax: (813) 632-1334; e-mail: faptp@moffitt.usf.edu.

27 - 29

4th Annual Joint Cancer Conference of the Florida Universities; Orlando, Fla.

Contact Claire A. Modarelli, Conference Coordinator, USF/H. Lee Moffitt Cancer Center & Research Institute, 12902 Magnolia Dr, Tampa, FL 33612. Telephone: (813) 903-4918 or (888) 456-2840.

February 2000

7 - 8

Ultrasound-Guided Permanent Prostate Implants: A Practical Review Course; Tampa, Fla.

Contact Brenda Barrow, Radiation Oncology, H. Lee Moffitt Cancer Center & Research Institute, 12902 Magnolia Dr, Tampa, FL 33612. Telephone: (813) 979-7294; fax: (813) 979-7231; e-mail: barrowbl@moffitt.usf.edu. (Also scheduled on March 20-21, June 26-27, September 11-12, and December 4-5.)

16 - 18

Radiation Oncology; Houston, Tex.

Contact the M.D. Anderson Cancer Center, Academic Programs, Office of CME/Conference Services, 1515 Holcombe Blvd, Houston, TX 77030. Telephone: (713) 792-2222; fax: (713) 794-1724; e-mail: meetings@mdacc.tmc.edu.

17 - 19

Tumor Genetics and Prevention 2000 - First International Conference; St. Gallen, Switzerland.

Contact Beatrice Nair, ESO-D Conference Secretariat, c/o ZeTuP, Rorschacherstr. 150, POB, 9006 St. Gallen, Switzerland. Telephone: +41 71 243 0032; fax: +41 71 245 6805; e-mail: eso-d@sg.zetup.ch.

March 2000

2 - 4

17th Annual International Breast Cancer Conference; Miami, Fla.

Contact the Miami Cancer Conference, Inc, PO Box 145331, Coral Gables, FL 33114-5331. Fax: (305) 447-3804.

2 - 4

International Conference on Advances in Cancer Immunotherapy; Princeton, NJ.

Contact the Garden State Cancer Center, Lois Gillespie, 520 Belleville Ave, Belleville, NJ 07109. Telephone: (973) 844-7000; fax: (973) 844-7020; e-mail: gscancer@att.net.

5 - 8

First International Conference on Translational Research and Pre-Clinical Strategies in Radio-Oncology; Lugano, Switzerland.

Contact Dr. Jacques Bernier, Cantonal Department of Radio-Oncology, San Giovanni Hospital, CH-6504 Bellinzona, Switzerland. Telephone: 00 41 91 820 91 57; fax: 00 41 91 820 90 44; e-mail: jbernier@cscs.ch; online registration: <http://www.osg.ch/ictr2000.html>.

17 - 18

Oesophageal Cancer — A Joint Symposium of the Royal College of Surgeons of Edinburgh and the Royal College of Physicians of Edinburgh; Edinburgh, United Kingdom.

Contact Mr. KGM Park, Consultant, Royal College of Surgeons of Edinburgh, Nicolson St, EH8 9DW Edinburgh, Scotland. Telephone: +44 131 527 1600; fax: +44 131 557 6406.

burgh, Scotland. Telephone: +44 131 527 1600; fax: +44 131 557 6406.

23 - 25

12th International Symposium Supportive Care in Cancer; Washington, DC.

Contact Imedex USA, 70 Technology Dr, Alpharetta, GA 30201. Telephone: (770) 751-7332; fax: (770) 751-7334; e-mail: meetings@imedex.com.

30 - April 2

Brain Tumour Conference; Los Angeles, Calif.

Contact Patient Services, 414 13th St, Ste 700, Oakland, CA 94612. Telephone: (510) 839-9777; fax: (510) 839-9779; e-mail: nbtf@braintumor.org.

31 - April 1

Florida Pituitary Symposium: Y2K Update - Focusing on Comprehensive Care of the Pituitary Patient; Clearwater Beach, Fla.

Contact Susan Easter, Continuing Education Department, Moffitt Cancer Center, 12902 Magnolia Dr, Tampa, FL 33612. Telephone: (813) 632-1775; e-mail: seaster@moffitt.usf.edu.

April 2000

1 - 5

American Association for Cancer Research 91st Annual Meeting; San Francisco, Calif.

Contact the American Association for Cancer Research, Public Ledger

Bldg, Ste 816, 150 S Independence Mall West, Philadelphia, PA 19106-3483. Telephone: (215) 440-9300; fax: (215) 440-9313; e-mail: meetings@aacr.org.

8 - 11

29th National Conference on Breast Cancer; San Francisco, Calif.

Contact the American College of Radiology, 1891 Preston White Dr, Reston, VA 20191-4397. Telephone: (703) 648-8962; fax: (703) 716-1283; e-mail: edu@acr.org.

14 - 15

End of Life Care in the 21st Century: Exploring the Controversies of Palliative Medicine; Tampa, Fla.

Contact Susan Easter, Continuing Education Department, Moffitt Cancer Center, 12902 Magnolia Dr, Tampa, FL 33612. Telephone: (813) 632-1775; e-mail: seaster@moffitt.usf.edu.

May 2000

20 - 23

American Society of Clinical Oncology (ASCO) Annual Meeting; New Orleans, La.

Contact the American Society of Clinical Oncology, 435 N Michigan Ave, Ste 1717, Chicago, IL 60611-4067. Fax: (312) 644-8557.