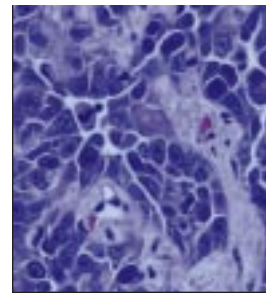


## CLINICAL RESEARCH PROTOCOLS FOR LUNG CANCER

---



### Adjuvant

**SWOG-9416, INT-0160** Phase II Pilot Study of Induction With CDDP/VP-16 Plus Radiotherapy Followed by Surgery and Adjuvant CDDP/VP-16 for Non-small Cell Lung Cancer Involving the Superior Sulcus (Pancoast Tumors) (summary last modified 05/1999)

Chairperson: Valerie W. Rusch. Telephone: 212-639-5873. Lead organization: Southwest Oncology Group. Age range: adult.

**CLB-9335** Phase II Study of Video-Assisted Wedge Resection (VAR) Followed by Radiotherapy for T1 N0 Non-small Cell Lung Cancer Patients With Cardiopulmonary Dysfunction (summary last modified 05/1995)

Chairperson: Hani Shennib. Telephone: 514-934-8007. Lead organization: Cancer and Leukemia Group B. Age range: 18 and over.

**CLB-9633, CLB-C9633** Phase III Randomized Study of Carboplatin/Paclitaxel vs No Adjuvant Chemotherapy After Resection of Stage IB (T2N0) Non-small Cell Lung Cancer (summary last modified 04/1999)

Chairperson: Gary M. Strauss. Telephone: 508-793-5759. Lead organization: Cancer and Leukemia Group B. Age range: 18 and over.

**CLB-9734** Phase III Randomized Study of Postoperative Paclitaxel and Carboplatin With or Without Adjuvant Radiotherapy for Resected Stage IIIA Non-small Cell

Lung Cancer (summary last modified 11/1998)

Chairperson: Leslie Kohman. Telephone: 315-464-6321. Lead organization: Cancer and Leukemia Group B. Age range: 18 and over.

### Neoadjuvant

**YALE-HIC-9317, NCI-G97-1345** Phase II Study of Irinotecan and Cisplatin Followed by Surgery in Patients With Stage IIIA Non-small Cell Lung Cancer (summary last modified 07/1998)

Chairperson: John R. Murren. Telephone: 203-737-1600. Lead organization: Yale Comprehensive Cancer Center. Age range: over 18.

**NCCTG-952451** Phase II Study of Neoadjuvant Paclitaxel and Carboplatin in Resectable Non-small Cell Lung Cancer (summary last modified 04/1997)

Chairperson: Randolph S. Marks. Telephone: 507-284-8318. Lead organization: North Central Cancer Treatment Group. Age range: 18 and over.

### Stage III, IIIA, and IIIB

#### *Phase III*

**RTOG-9801** Phase III Randomized Study of Amifostine Mucosal Protection in Patients With Favorable Performance Inoperable Stage II, IIIA, or IIIB Non-small Cell Lung Cancer Receiving Sequential Induction and Concur-

*This list of clinical research protocols relating to lung cancer is compiled for your convenience.*

*Clinical Research Protocols*

*For more information on these protocols, please call PDQ, a service of the National Cancer Institute, at 1-800-4-CANCER.*

---

rent Hyperfractionated Radiotherapy With Paclitaxel and Carboplatin (summary last modified 08/1999)

Chairperson: Benjamin Movsas. Telephone: 215-728-5304. Lead organization: Radiation Therapy Oncology Group. Age range: 18 and over.

**RP-56976-TAX-326, RP-56976-V-326** Phase III Randomized Study of Docetaxel Plus Cisplatin or Docetaxel Plus Carboplatin versus Vinorelbine Plus Cisplatin in Chemotherapy-Naive Patients With Unresectable, Stage IIIB, Stage IV, or Recurrent Non-small Cell Lung Cancer (summary last modified 05/1999)

Chairperson: Francis C. Gamza. Telephone: 610-454-5037. Lead organization: Rhone-Poulenc Rorer Pharmaceuticals, Inc. Age range: 18 and over.

**E-2597** Phase III Randomized Study of Induction Paclitaxel and Carboplatin Followed by Standard Radiotherapy vs Hyperfractionated Accelerated Radiotherapy for Patients With Unresectable Stage IIIA or IIIB Non-small Cell Lung Cancer (summary last modified 10/1999)

Chairperson: Chandra Prakash Belani. Telephone: 412-648-6619. Lead organization: Eastern Cooperative Oncology Group. Age range: 18 and over.

**BB-C03-IVB/173, NCI-V96-1113** Phase III Randomized Study of Marimastat (a Matrix Metalloproteinase Inhibitor) in Patients With Minimal Disease Stage III Non-small

Cell Lung Cancer (summary last modified 05/1999)

Chairperson: Maria Berkheimer. Telephone: 410-266-7909. Lead organization: British Biotech, Inc. Age range: 18 and over.

**AG-3340-006** Phase III Randomized Study of Matrix Metalloprotease Inhibitor AG3340 in Combination With Paclitaxel and Carboplatin in Patients With Recurrent or Metastatic Non-small Cell Lung Cancer (summary last modified 07/1999)

Chairperson: Mary Collier. Telephone: 619-622-8036. Lead organization: Agouron Pharmaceuticals, Inc. Age range: 18 and over.

**CLB-9734** Phase III Randomized Study of Postoperative Paclitaxel and Carboplatin With or Without Adjuvant Radiotherapy for Resected Stage IIIA Non-small Cell Lung Cancer (summary last modified 11/1998)

Chairperson: Leslie Kohman. Telephone: 315-464-6321. Lead organization: Cancer and Leukemia Group B. Age range: 18 and over.

### Legend for Abbreviations:

AG	= Agouron Pharmaceuticals, Inc
BB	= British Biotech, Inc
CLB	= Cancer and Leukemia Group B
E	= Eastern Cooperative Oncology Group
NCCTG	= North Central Cancer Treatment Group
RP	= Rhône-Poulenc Rorer Pharmaceuticals, Inc
RTOG	= Radiation Therapy Oncology Group
SWOG	= Southwest Oncology Group
YALE	= Yale Comprehensive Cancer Center