

CALENDAR OF EVENTS

June 2000

22 - 23

Radioguided Surgery and Minimally Invasive Breast Biopsy; Tampa, Fla.

Contact the Center for Minimally Invasive Surgical Techniques, H. Lee Moffitt Cancer Center & Research Institute, 12902 Magnolia Dr, Tampa, FL 33612. Telephone: 813-979-7252 or 1-888-456-2840; fax: 813-903-4910. (Also scheduled on September 14-15, November 16-17, and December 7-8.)

July 2000

1 - 6

22nd International Congress of Chemotherapy; Amsterdam, The Netherlands.

Contact the Amsterdam RAI, Europaplein, 1078 GZ Amsterdam, The Netherlands. Telephone: +31-20-549-1212.

9 - 22

5th International Summer School Oncology for Medical Students; Groningen, The Netherlands.

Contact Groningen University Hospital, Dept of Surgery, Hanzeplein 1, 9713 GZ Groningen, The Netherlands. Telephone: +31-50-361-2317; fax: +31-50-361-4873; e-mail: summerschool@chir.azg.nl.

19 - 22

Comprehensive Lung Cancer Conference; Coeur d'Alene, Idaho.

Contact the Office of Continu-

ing Professional Education. Telephone: 813-974-4296 or 800-852-5362; fax: 813-974-3217; e-mail: hmoretti@hsc.usf.edu.

August 2000

26 - 30

28th World Congress of the International Society of Hematology; Toronto, Canada.

Contact the ISH 2000 Secretariat, 275 Bay St, K1R 5Z5 Toronto, Canada. Telephone: 613-238-9998; fax: 613-236-2727; e-mail: ish2000@intertask.net.

September 2000

3 - 8

FIGO (International Federation of Gynecology and Obstetrics) 2000 World Congress; Washington, DC.

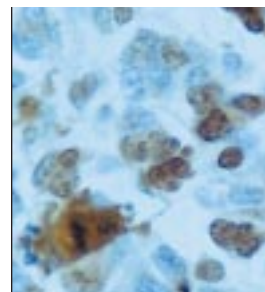
Contact the FIGO 2000 Congress Secretariat, c/o Registration Department, 4200 St. Laurent Blvd, Suite 1110, Montreal, Quebec, Canada H2W 2R2. Telephone: 514-847-2262; fax: 514-289-9844; online registration: www.figo2000.com.

7 - 9

Leukaemia 2000: Towards a Cure; Houston, Tex.

Contact Darwin Medical Communications, Napier Court, Abingdon Science Park, OX143YT Abingdon, United Kingdom. Telephone: 44-1235-555-344; fax: 44-1235-555-299; e-mail: leukemia2000@darwin-med.co.uk.

If you would like to include an event in this calendar in future issues of Cancer Control, please mail the information to Cancer Control: Journal of the Moffitt Cancer Center, 12902 Magnolia Drive, Tampa, FL 33612, call (813) 632-1349, fax to (813) 903-4950, or send via e-mail to ccjournal@moffitt.usf.edu.



11 - 12

Ultrasound-Guided Permanent Prostate Implants: A Practical Review Course; Tampa, Fla.

Contact Brenda Barrow, Radiation Oncology, H. Lee Moffitt Cancer Center & Research Institute, 12902 Magnolia Dr, Tampa, FL 33612. Telephone: 813-979-7294; fax: 813-979-7231; e-mail: barrowbl@moffitt.usf.edu. (Also scheduled on December 4-5.)

11 - 15

9th World Conference on Lung Cancer; Tokyo, Japan.

Contact International Communications Specialists, Inc (ICS), Sabo Kaikan-bekkan, 2-7-4 Hirakawacho, Chiyoda-ku, 102-8646 Tokyo, Japan. 81-3-3263-6474; fax: 81-3-3263-7077; e-mail: wclc2000@ics-inc.co.jp.

14 - 16

International Conference on High-dose Chemotherapy in Breast and Ovarian Cancer; Florence, Italy.

Contact the EBMT (European Group for Blood and Marrow Transplantation) International Conference on High-dose Chemotherapy, c/o AKM, Congress Service, Clarasstrasse 57, PO Box, CH-4005 Basel, Switzerland. Telephone: +41-61-686-77-11; fax: +41-61-686-77-88; e-mail: info@akm.ch.

26 - 30

EBCC 2 - The 2nd European Breast Cancer Conference; Brussels, Belgium.

Contact Ms Kris Vantongelen,

EBCC-2 - FECS Conference Unit, Avenue E. Mounier, 83, B-1200 Brussels, Belgium. Telephone: +32-2-775-02-06; fax: +32-2-775-02-00; e-mail: EBCC-2@fecsb.be.

October 2000**12 - 14**

Cancer Therapy for the New Millennium; Palermo, Italy.

Contact the Center for Bio-Medical Communication, 433 Hackensack Avenue, Hackensack, NJ 07601. Telephone: 201-342-5300; fax: 201-342-7555; e-mail: cmeinfo@cbcbiomed.com. Online information: www.cbcbiomed.com.

12 - 14

8th Conference on Radioimmuno-detection and Radioimmunotherapy of Cancer; Princeton, NJ.

Contact the Garden State Cancer Centre, Lois Gillespie, 520 Belleville Avenue, Belleville, NJ 07109. Telephone: 973-844-7007; fax: 973-844-7020; e-mail: gscancer@att.net.

13 - 17

25th European Society for Medical Oncology (ESMO) and 25th ESMO Congress; Hamburg, Germany.

Contact the ESMO Congress Secretariat, Via Soldino 22, CH-6900 Lugano, Switzerland. Telephone: 41-91-950-0785; fax: 41-91-950-0787; e-mail: esmo@dial.eunet.ch.

14 - 17

New Molecular Targets for Cancer Therapy; St. Petersburg, Fla.

Contact the Continuing Education Office, H. Lee Moffitt Cancer Center & Research Institute, 12902 Magnolia Dr, Tampa, FL 33612. Telephone: 813-632-1741; fax: 813-979-3874; e-mail: leahype@moffitt.usf.edu.

22 - 26

American Society for Therapeutic Radiology and Oncology: 42nd Annual Meeting; Boston, Mass.

Contact the American Society for Therapeutic Radiology and Oncology, 12500 Fair Lakes Circle, Ste 375, Fairfax, VA 22033-3882. Telephone: 703-502-1550; fax: 703-502-7852.

November 2000**2 - 5**

Joint Meeting of American Association for Cancer Education and European Association for Cancer Education; Washington, DC.

Contact Virginia Krawiec, MPA, PO Box 601, Snellville, GA 30078-0601. Telephone: 404-329-7612; fax: 404-321-4669; e-mail: gkrawiec@cancer.org.

8 - 11

Chemotherapy Foundation Symposium XVIII: Innovative Cancer Therapy for Tomorrow; New York, NY.

Contact the Mount Sinai Medical Center, Ezra Greenspan/Jaclyn Silverman, Medical Oncology Dept, One Gustave Levy Place, PO Box 1178, New York, NY 10029. Telephone: 212-241-6772; fax: 212-369-5440 or 212-996-5787; e-mail: J_silverman@smtplink.mssm.edu.