

WELL-DEFINED HYPODENSITY IN THE LIVER

Marla R. Hersh, MD

From the Department of Radiology at the H. Lee Moffitt Cancer Center & Research Institute, Tampa, Fla.

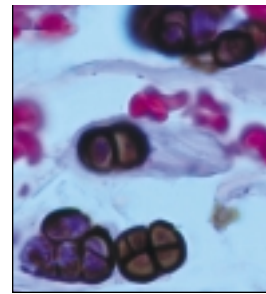


Fig 1. — CT scan of the liver showing a well-margined hypodensity at the anterior medial segment of the left lobe of the liver (arrow).

Case Description

Fig 1 shows a computed tomography (CT) scan of a 22-year-old woman with a history of adenocarcinoma of the cervix. Five months prior to the study, she had undergone a radical hysterectomy followed by adjuvant radiation therapy and chemotherapy.

Fig 2 shows a CT scan 3 months later.

The most likely diagnosis is:

1. metastatic disease
2. focal fatty infiltration
3. hemangioma
4. liver cyst



Fig 2. — CT scan 3 months later showing an increase in size of the lesion (arrow).

*This regular feature
will enhance your
knowledge of imaging
technology in oncologic
diagnosis, treatment,
and evaluation.*

Imaging in Oncology

*Click here to go
to the answer
and discussion.*