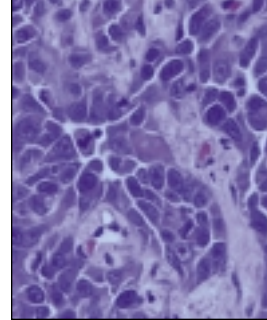


CLINICAL RESEARCH PROTOCOLS FOR LUNG CANCER



Detection and Diagnosis

PLCO-1, NCI-P93-0050 A 16-Year Randomized Screening Study for Prostate, Lung, Colorectal, and Ovarian Cancer - PLCO Trial

Chairperson: John K. Gohagan. Telephone: 301-496-3982. Lead organization: Early Detection Branch. Age range: 55 to 74.

NCI-96-C-0128 Pilot Study of Autofluorescence Imaging and White-Light Bronchoscopy for the Early Detection of Lung Cancer

Chairperson: J. Michael Hamilton. Telephone: 301-496-0901. Lead organization: Division of Clinical Sciences. Age range: 18 and over.

JHL-45199, NCI-V00-1600 Randomized Study Comparing Annual Chest X-rays and Annual Spiral CT Scans in Patients at High Risk for Lung Cancer

Chairperson: Renato Vincenzo LaRocca. Telephone: 502-561-8200. Lead organization: Jewish Hospital. Age range: 40 to 70.

NYU-9928, NCI-G01-1913 Screening and Diagnostic Study of Computerized Tomography in Women at High Risk for Lung Cancer

Chairperson: Abraham Chachoua. Telephone: 212-263-6485. Lead organization: NYU School of Medicine's Kaplan Comprehensive Cancer Center. Age range: over 18.

Non-Small-Cell Lung Cancer

High-Priority Trial

RTOG-9309, INT-0139 Phase III Randomized Study of Radiotherapy Concurrently With Cisplatin and Etoposide With or Without Sur-

gical Resection in Patients With Stage IIIA (N2) Non-Small-Cell Lung Cancer

Chairperson: David S. Ettinger. Telephone: 410-955-8846. Lead organization: Radiation Therapy Oncology Group. Age range: 18 and over.

Phase III Trials

CNR-NICO-01, EU-97010 Phase III Adjuvant Study of Cisplatin and Etoposide Combination for Stages I, II, and IIIA Non-Small Cell Lung Cancer

Chairperson: Antonio Nicolucci. Telephone: 0872/578571. Lead organization: Chemo Prevention Unit. Age range: 70 and under.

RTOG-9801 Phase III Randomized Study of Amifostine Mucosal Protection in Patients with Favorable Performance Inoperable Stage II, IIIA, or IIIB Non-Small Cell Lung Cancer Receiving Sequential Induction and Concurrent Hyperfractionated Radiotherapy with Paclitaxel and Carboplatin

Chairperson: Benjamin Movsas. Telephone: 215-728-5304. Lead organization: Radiation Therapy Oncology Group. Age range: 18 and over.

SWOG-0003, CTSU Phase III Randomized Study of Carboplatin and Paclitaxel With or Without Tirapazamine in Patients With Advanced Non-Small Cell Lung Cancer

Chairperson: Stephen K. Williamson. Telephone: 913-588-6029. Lead organization: Southwest Oncology Group. Age range: 18 and over.

E-3598, CTSU Phase III Randomized Study of Carboplatin,

This list of clinical research protocols relating to lung cancer is compiled for your convenience.

For more information on these protocols, please call PDQ, a service of the National Cancer Institute, at 1-800-4-CANCER. The PDQ Web site is accessible at <http://cancer.net.nci.nih.gov/trialsrch.shtml>.

A searchable Web site developed by the National Library of Medicine is also available at <http://clinicaltrials.gov>.

Paclitaxel, and Radiotherapy With or Without Thalidomide in Patients With Stage III Non-Small Cell Lung Cancer

Chairperson: Joan Hoff Schiller. Telephone: 608-263-8600. Lead organization: Eastern Cooperative Oncology Group. Age range: 18 and over.

CLB-9633, CLB-C9633, CTSU Phase III Randomized Study of Paclitaxel and Carboplatin Versus No Adjuvant Chemotherapy After Resection in Patients With Stage IB Non-Small Cell Lung Cancer

Chairperson: Gary M. Strauss. Telephone: 617-632-2130. Lead organization: Cancer and Leukemia Group B. Age range: 18 and over.

CLB-39801, CTSU Phase III Randomized Study of Concurrent Carboplatin, Paclitaxel, and Radiation Therapy With or Without Prior Induction Carboplatin and Paclitaxel in Patients With Unresectable Stage III Non-Small Cell Lung Cancer

Chairperson: Everett E. Vokes. Telephone: 773-834-0783. Lead organization: Cancer and Leukemia Group B. Age range: 18 and over.

ITA-GEMVIN, EU-99016 Phase III Randomized Study of Gemcitabine Plus Vinorelbine vs Standard Chemotherapy Containing Cisplatin in Patients With Stage IIIB or IV Non-Small Cell Lung Cancer

Chairperson: Cesare Gridelli. Telephone: 39-81-590 3269. Lead organization: Istituto Nazionale per lo Studio e la Cura dei Tumori. Age range: under 70.

MDA-ID-99303, NCI-T99-0046

Phase III Randomized Study of Induction Chemotherapy and Radiotherapy With or Without AE-941, a Shark Cartilage Extract, in Patients With Stage IIIA or IIIB Unresectable Non-Small Cell Lung Cancer

Chairperson: Charles Lu. Telephone: 713-792-6363. Lead organization: University of Texas - M.D. Anderson Cancer Center. Age range: 18 and over.

E-2597, CTSU Phase III Randomized Study of Induction Paclitaxel and Carboplatin Followed by Standard Radiotherapy vs Hyperfractionated Accelerated Radiotherapy for Patients With Unresectable Stage IIIA or IIIB Non-Small Cell Lung Cancer

Chairperson: Chandra Prakash Belani. Telephone: 412-648-6619. Lead organization: Eastern Cooperative Oncology Group. Age range: 18 and over.

NCCTG-979251, NCI-P98-0139 Phase III Randomized Study of Low Molecular Weight Heparin (Dalteparin) Plus Standard Therapy Versus Standard Therapy Alone in Patients With Advanced Cancer

Chairperson: Scott Okuno. Telephone: 507-284-2511. Lead organization: North Central Cancer Treatment Group. Age range: 18 and over.

ACOSOG-Z0030 Phase III Randomized Study of Mediastinal Lymph Node Sampling Versus Complete Lymphadenectomy During Pulmonary Resection in Patients with N0 or N1 (Less Than Hilar) Non-Small Cell Lung Cancer

Chairperson: Mark S. Allen. Telephone: 507-284-2644. Lead organization: American College of Surgeons Oncology Group. Age range: 18 and over.

Phase II Trials

CLB-9335 Phase II Study of Video-Assisted Thoracoscopic Wedge Resection (VAR) Followed by Radiotherapy in Patients With Stage I Non-Small Cell Lung Cancer and Cardiopulmonary Dysfunction

Chairperson: Richard L. Schilsky. Telephone: 773-834-3914. Lead organization: Cancer and Leukemia Group B. Age range: 18 and over.

CAN-NCIC-BR18, BMS-CA161-003 Phase II/III Randomized Study of Paclitaxel and Carboplatin With or Without BMS-275291 in Patients With Advanced or Metastatic Non-Small Cell Lung Cancer

Chairperson: Michael Smylie. Telephone: 780-432-8757. Lead organization: NCIC-Clinical Trials Group. Age range: 18 and over.

Small-Cell Lung Cancer

Phase III Trials

DUT-KWF-CKVO-9802, EU-98059 Phase III Randomized Study of Cyclophosphamide, Doxorubicin, and Etoposide Versus Carboplatin and Paclitaxel in Patients With Extensive Stage Small Cell Lung Cancer

Chairperson: Egbert F. Smit. Telephone: 31-20-444-4752. Lead organization: Vrije Universiteit Medisch Centrum. Age range: over 18.

NCCTG-N99C5, NCI-P00-0169 Phase III Randomized Study of Donepezil and Vitamin E in the Prevention of Cognitive Dysfunction Following Cancer Treatment That Included Prophylactic Cranial Irradiation in Patients With Small Cell Lung Cancer

Chairperson: Aminah Jatoi.

Telephone: 507-284-2511. Lead organization: North Central Cancer Treatment Group. Age range: 18 and over.

CLB-9732 Phase III Randomized Study of Etoposide and Cisplatin With or Without Paclitaxel in Patients With Extensive Stage Small Cell Lung Cancer

Chairperson: Harvey B. Niell. Telephone: 901-528-5798. Lead organization: Cancer and Leukemia Group B. Age range: 18 and over.

FRE-IGR-PCI-99, EU-99051, FRE-IFCT-99.01, FRE-IGR-PCI99-EULINT1 Phase III Randomized Study of High-Dose Versus Standard-Dose Prophylactic Cranial Radiotherapy in Patients With Limited Stage Small Cell Lung Cancer in Complete Remission

Chairperson: Cecile Le Pechoux. Telephone: 33-1-42-11-47-57. Lead organization: Institut Gustave Roussy. Age range: 70 and under.

FRE-CPC014, EU-96009 Phase III Randomized Study of Induction Combination Chemotherapy with Two Different Doses of Cyclophosphamide Followed by Alternating Chemotherapy and Radiotherapy in Limited Stage Small Cell Lung Cancer

Chairperson: Thierry Le Chevalier. Telephone: 33-1-42-11-43-22. Lead organization: Institut Gustave Roussy. Age range: under 70.

EORTC-08962, EORTC-08962B Phase III Randomized Study of Marimastat in Patients with Small Cell Lung Cancer Following a Response to First Line Chemotherapy

Chairperson: Christian Manegold. Telephone: 0049-6221-3961.

Lead organization: EORTC Lung Cancer Group. Age range: 16 and over.

CWRU-SKF-1598, NCI-G99-1524, SB-104864-A/396 Phase III Randomized Study of Oral Versus Intravenous Topotecan in Patients With Limited or Extensive Small Cell Lung Cancer That Has Relapsed Following First Line Therapy

Chairperson: Nathan Levitan. Telephone: 216-844-3695. Lead organization: Ireland Cancer Center. Age range: 18 and over.