

This regular feature will enhance your knowledge of imaging technology in oncologic diagnosis, treatment, and evaluation.

IMAGING IN ONCOLOGY: RADIOLOGIC ABNORMALITIES IN THE LEGS

*Marjorie A. Thurlow, MSIV, Gregory Carney, MD, and George B. Greenfield, MD
From the University of South Florida College of Medicine, Tampa, Florida.
E-mail: mthurlow@hsc.usf.edu*

Case Description:

A 73-year-old woman presented with right hip pain and a history of lung cancer. Radiographic studies showed marked periosteal proliferation, most notably in the long bones (Fig 1). Subsequently, anterior and posterior whole-body bone imaging was performed using 28.0 mCi of technetium 99m hydroxydiphosphonate (HDP) administered intravenously. Increased bilaterally symmetric uptake along

the cortices of the femurs and tibia was observed (Fig 2).

Which is the most likely diagnosis?

1. Chronic venous stasis
2. Osteoarthritis
3. Hypertrophic osteoarthropathy
4. Multifocal osteomyelitis
5. Thyroid acropachy
6. Hypervitaminosis A



Fig 1. — Marked periosteal proliferation, most notably in the long bones.

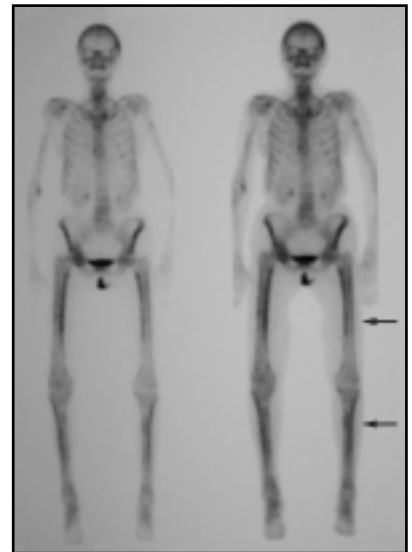


Fig 2. — Increased bilateral symmetric uptake along the cortices of the femurs and tibia.

Click here to go to the answer and discussion.