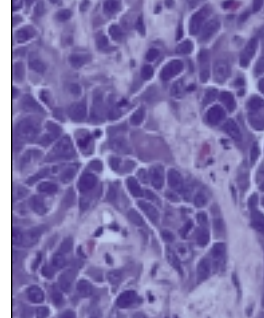


SELECTED CLINICAL RESEARCH PROTOCOLS INCORPORATING IMMUNOLOGICAL APPROACHES FOR HEMATOLOGIC TUMORS



Non-Hodgkin's Lymphoma

NCI-3491, NCI-99-C-0143

Phase I Pilot Study of Donor Th2 Cells for Prevention of Graft- versus-Host Disease Following Non-Myeloablative, HLA-Matched Allogeneic Peripheral Blood Stem Cell Transplantation in Patients With Hematologic Malignancies

Chairperson: Michael Bishop. Telephone: 301-435-2764. Lead organization: Center for Cancer Research. Age range: 16 to 75.

MAYO-MC998C, NCI-312

Phase I Study of Ibritumomab Tiuxetan, Rituximab, and IDEC-In2B8 With and Without Sargramostim (GM-CSF) and Interleukin-11 in Patients With Relapsed or Refractory Low-Grade or Follicular CD20+ Non-Hodgkin's Lymphoma

Chairperson: Thomas E. Witzig. Telephone: 507-284-0527. Lead organization: Mayo Clinic Cancer Center. Age range: 18 and over.

UCCRC-T98-0039, UCCRC-197-0270, NCI-T98-0039 Phase I Study of Irinotecan and UGT1A1 Enzyme Genotype in Patients With Solid Tumors or Lymphoma

Chairperson: Mark J. Ratain. Telephone: 773-702-1815. Lead organization: University of Chicago Cancer Research Center. Age range: 18 and over.

NCI-01-C-0213, NCI-5336

Phase I Study of Recombinant BL22 Immunotoxin in Patients With CD22-Positive B-Cell Non-Hodgkin's Lymphoma or Chronic Lymphocytic Leukemia

Chairperson: Robert Kreitman. Telephone: 301-496-6947. Lead organization: Center for Cancer Research. Age range: 18 and over.

JHOC-J0004, NCI-970 Phase I Study of Rituximab, Yttrium Y90 Ibritumomab Tiuxetan, and Autologous Peripheral Blood Stem Cell Rescue in Patients With Indolent Non-Hodgkin's Lymphoma

Chairperson: Ian W. Flinn. Telephone: 410-614-5542. Lead organization: Sidney Kimmel Comprehensive Cancer Center at Johns Hopkins. Age range: 18 to 70.

NCI-97-C-0040G, NCI-T96-0036N Phase II Randomized Pilot Study of Etoposide, Prednisone, Vincristine, Cyclophosphamide, Doxorubicin, and Rituximab With or Without Interleukin-12 in Patients With AIDS-Related Non-Hodgkin's Lymphoma EPOCH Chemotherapy Plus Rituximab for Previously Treated Patients With AIDS-Associated Lymphoma

Chairperson: Richard F. Little. Telephone: 301-402-6296. Lead organization: Center for Cancer Research. Age range: 18 and over.

NCI-93-C-0133L, NCI-T93-0023N, NCI-MB-303, CRB-9307 Phase II Study of Etoposide, Prednisone, Vincristine, Cyclophosphamide, and Doxorubicin (EPOCH) With Rituximab and Filgrastim (G-CSF) in Patients With Stage I-IV Non-Hodgkin's Lymphoma

Chairperson: Wyndham Hopkins Wilson. Telephone: 301-435-2415. Lead organization: Center for Cancer Research. Age range: 21 and over for Burkitt/Burkitt-like lymphoma; not specified for other subtypes.

NCI-9900.v6, NCI-00-C-0050

Phase III Randomized Study of Keyhole Limpet Hemocyanin and Sargramostim (GM-CSF) With or Without Autologous Lymphoma-Derived Idiotype-Specific Vaccination After

This list of clinical research protocols relating to hematologic malignancies is compiled for your convenience.

Additional trials focusing on cancer vaccines for hematologic malignancies are listed in Table 2 on page 144.

For more information on these protocols, please call PDQ, a service of the National Cancer Institute, at 1-800-4-CANCER. The PDQ Web site is accessible at http://www.cancer.gov/clinical_trials.

A searchable Web site developed by the National Library of Medicine is also available at <http://clinicaltrials.gov>.

Standard Cyclophosphamide, Doxorubicin, Etoposide, and Prednisone in Patients With Stage II-IV Follicular Lymphoma

Chairperson: Barry L. Gause. Telephone: 301-496-0901. Lead organization: Center for Cancer Research. Age range: 18 and over.

IDEC-Y2B8 Protocol 106-98

A Multicenter, Open Label Trial to Evaluate the Efficacy and Safety of 90Y-ibritumomab tiuxetan (IDEC-Y2B8, Zevalin) Radioimmunotherapy of Relapsed or Refractory Low-Grade or Follicular Transformed B-Cell Non-Hodgkin's Lymphoma

Chairperson: Bryan Leigh. Telephone: 858-431-8961. Lead organization: IDEC Pharmaceuticals. Age range: 18 and over

Chronic Myelogenous Leukemia

MDA-DM-97325, NCI-T98-0017 Phase I/II Randomized Study of PR1 Leukemia Peptide Vaccine and Montanide ISA-51 in Patients With Chronic Myeloid Leukemia, Acute Myeloid Leukemia, or Myelodysplastic Syndrome

Chairperson: Jeffrey J. Moll-drem. Telephone: 1-800-392-1611. Lead organization: University of Texas - MD Anderson Cancer Center. Age range: over 18.

MSGCC-0076, NCI-2490 Phase II Study of Bevacizumab, Cytarabine, and Mitoxantrone in Patients With Poor-Risk Hematologic Malignancies

Chairperson: Judith E. Karp. Telephone: 410-328-2573. Lead organization: Marlene & Stewart Greenebaum Cancer Center, University of Maryland. Age range: 18 and over.

MDA-ID-00323, NCI-2431 Phase II Study of Bevacizumab, Idarubicin, and Cytarabine in Patients With Blastic Phase Chronic Myelogenous Leukemia

Chairperson: Jorge Cortes. Telephone: 713-794-5783. Lead organization: University of Texas - MD Anderson Cancer Center. Age range: over 18.

Multiple Myeloma

NCI-00-C-0201, NCI-1029 Phase I/II Study of Purified Myeloma Protein Immunization in Sibling Peripheral Blood Stem Cell (PBSC) Donors and in Patients With Multiple Myeloma Who Are Undergoing Nonmyeloablative Chemotherapy and HLA Matched Allogeneic PBSC Transplantation

Chairperson: Sattva Neelapu. Telephone: 301-846-1321. Lead organization: Center for Cancer Research. Age range: 18 to 75.

Acute Lymphocytic Leukemia

OSU-00H0223, OSU-0037, NCI-130 Phase I Study of Rituximab Followed by Interleukin-2 in Patients With CD20-Positive B-Cell Lymphoid Malignancy

Chairperson: Pierluigi Porcu. Telephone: 614-293-7521/7892. Lead organization: Arthur G. James Cancer Hospital - Ohio State University. Age range: 18 and over.

Chronic Lymphocytic Leukemia

OSU-00H0230, NCI-1254, OSU-0101 Phase I Study of Monoclonal Antibody Hu1D10 in Patients With Previously Treated Chronic

Lymphocytic Leukemia, Small Lymphocytic Lymphoma, or Acute Lymphoblastic Leukemia

Chairperson: Pierluigi Porcu. Telephone: 614-293-7521/7892. Lead organization: Arthur G. James Cancer Hospital - Ohio State University. Age range: 18 and over.

NCI-02-C-0020, MB-NAVY-B01-053, PCI-01-028, NCI-5331 Phase I Study of STI571 in Patients With Advanced Malignancies

Chairperson: Ramesh K. Ramanathan. Telephone: 412-648-6507. Lead organization: University of Pittsburgh Cancer Institute. Age range: over 18.

Adult T-Cell Leukemia/Lymphoma

SUMC-NCI-102, NCI-102 Phase I Study of Monoclonal Antibody HuM291 in Patients With Advanced or Recurrent CD3+ T-Cell Lymphomas

Chairperson: Alan Yuen. Telephone: 650-725-9057. Lead organization: Stanford University Medical Center. Age range: 18 and over.

Hairy Cell Leukemia

NCI-96-C-0064F, NCI-T95-0042N Phase I Study of the Recombinant Immunotoxin LMB-2 in Patients With Tac-Expressing Leukemias and Lymphomas

Chairperson: Robert Kreitman. Telephone: 301-496-6947. Lead organization: Center for Cancer Research. Age range: 18 and over.